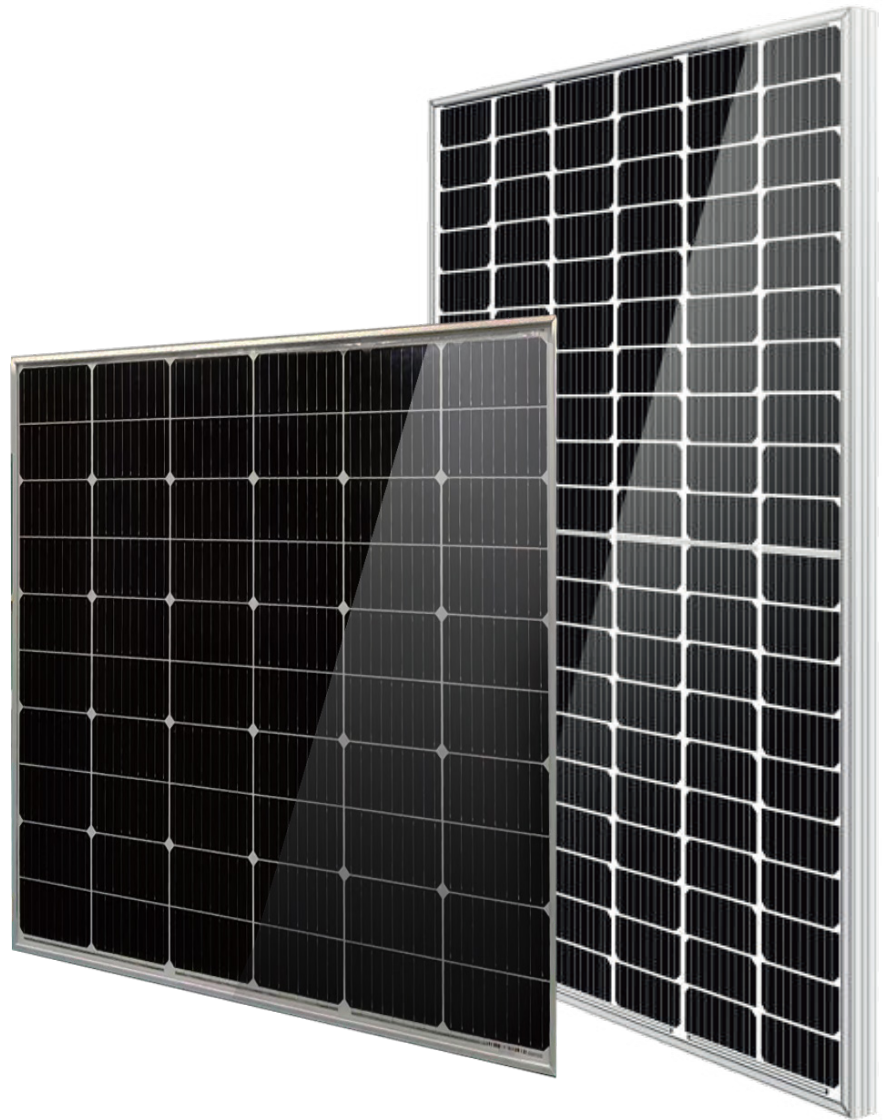


Plusrite[®]

PLS MONO

200-600W | Common Design

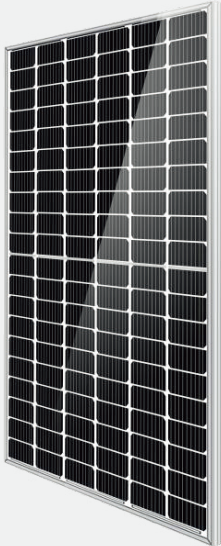


Product Picture Show

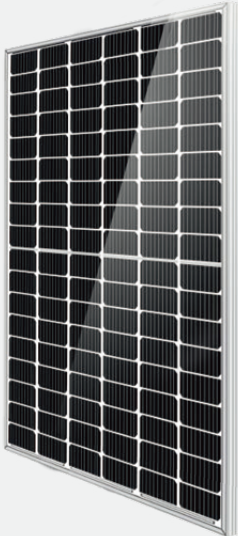
Common design



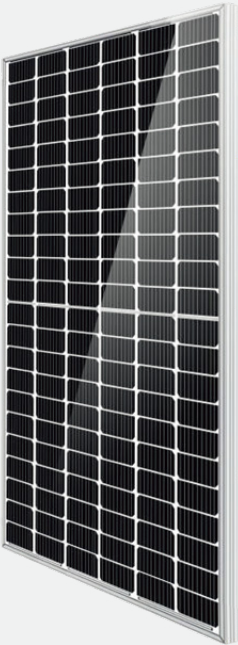
M200-60



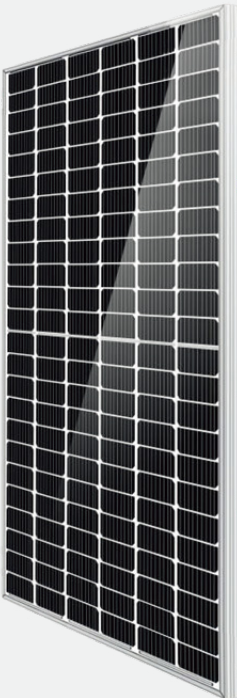
M400-120



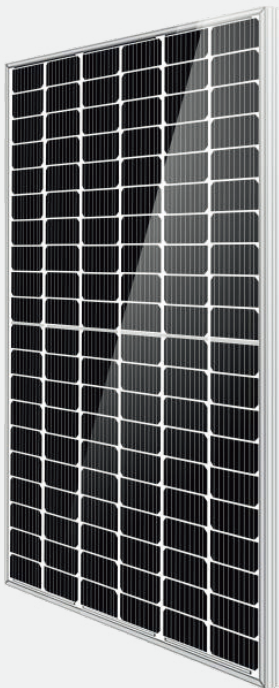
M450-108



M500-132



M560-144

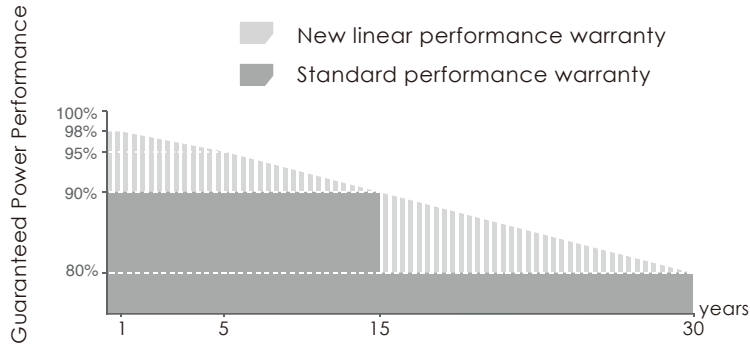


M600-120

Product profile



Premium Performance Warranty



Features

- 1) Our solar cells offer high conversion efficiency to ensure the highest quality
- 2) Our high performing modules have an industry low tolerance of 0~+5W
- 3) The modules can withstand high wind-pressure, snow loads and extreme temperatures
- 4) Passed IEC 5400 Pa mechanical loading test
- 5) Industry leading power output warranty —10 years/90% 25 years/80%
- 6) 12-year warranty on materials & workmanship
- 7) Fire Rating: Class 1

Applications



Centralized ground power station



Rooftop distributed power station

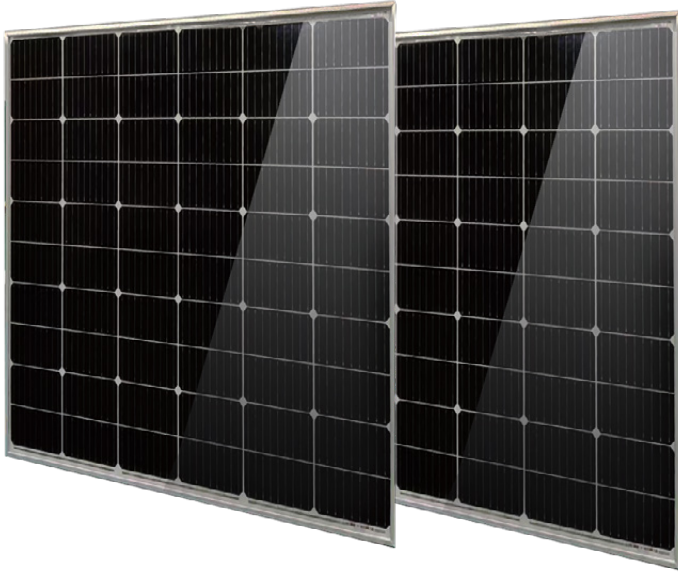


Domestic rooftop power station

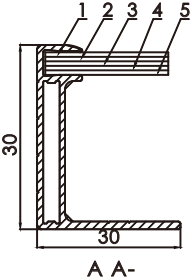
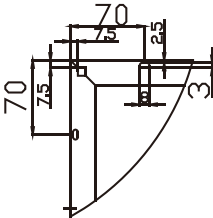
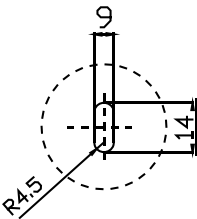
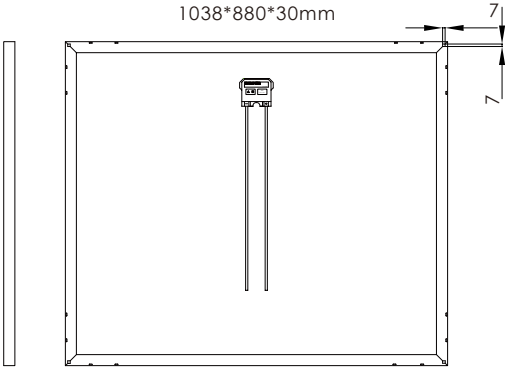


Solar street light

M200-60



Dimensions



Packaging Configuration

Standard packaging: 66pcs / pallet
 Module quantity per 20'container: 700pcs
 Module quantity per 40'container: 1450pcs

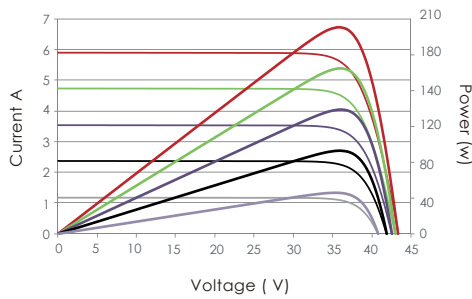
Specifications

Module Type M200-60
 Maximum Power at STC (Pmax) 200Wp
 Maximum Power Voltage (Vmp) 34.65V
 Maximum Power Current (Imp) 5.78A
 Open-circuit Voltage (Voc) 42.13V
 Short-circuit Current (Isc) 6.12A
 Module Efficiency (%) 21.90%
 Operating Temperature (°C) -40°C~+85°C
 Maximum system voltage 1000V
 Maximum series fuse rating 15A
 Power tolerance 0 ~ +5W
 Temperature coefficients of Pmax -0.45%/°C
 Temperature coefficients of Voc -0.28%/°C
 Temperature coefficients of Isc 0.04%/°C
 Nominal operating cell temperature (NOCT) 45±2 °C

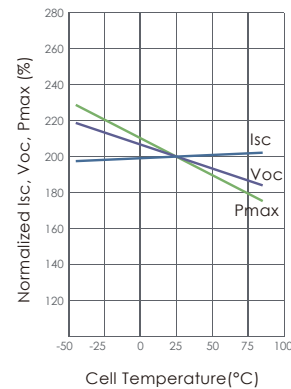
Mechanical Characteristics

Cell Type Orion Perc Mono-crystalline (157mm*52.33mm)
 No. of cells 60 (6×10)
 Dimensions 1038*880*30mm
 Weight 10.5kg
 Front Glass Orion Technology
 Frame Anodized Aluminium Alloy (Sliver/Black optional)
 Junction Box IP67 Rated
 Output Cables TÜV 1x4.0mm² UL 12AWG, Length: 900mm

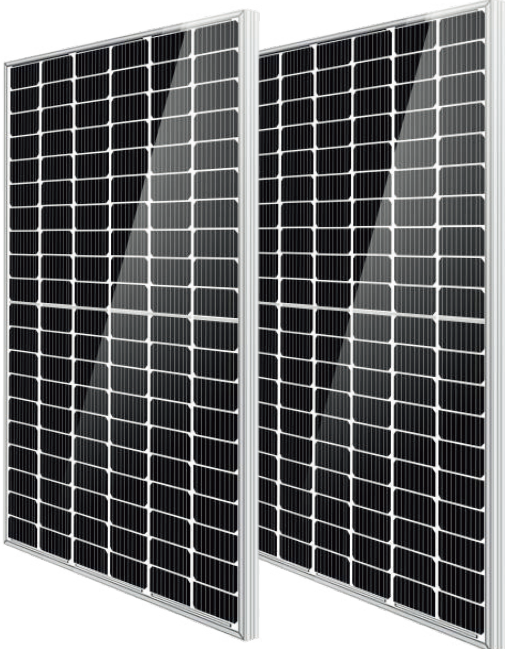
Current-Voltage & Power-Voltage Curves(200W)



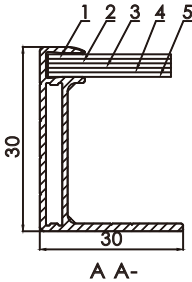
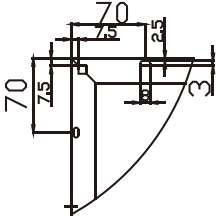
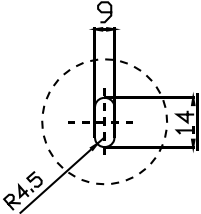
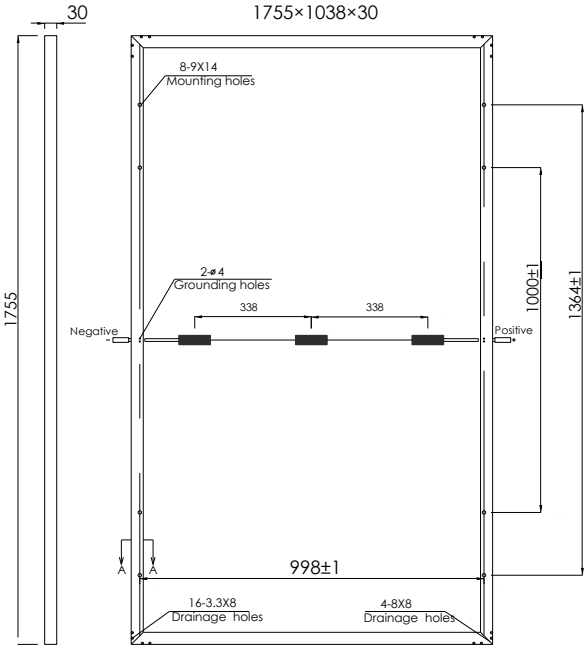
Temperature Dependence of Isc, Voc, Pmax



M400-120



Dimensions



Packaging Configuration

Standard packaging: 66pcs / pallet
 Module quantity per 20'container: 348pcs
 Module quantity per 40'container: 858pcs

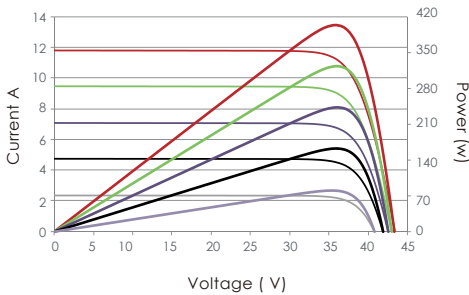
Specifications

Module Type M400-120
 Maximum Power at STC (Pmax) 400Wp
 Maximum Power Voltage (Vmp) 34.65V
 Maximum Power Current (Imp) 11.54A
 Open-circuit Voltage (Voc) 42.16V
 Short-circuit Current (Isc) 12.15A
 Module Efficiency (%) 21.96%
 Operating Temperature (°C) -40°C~+85°C
 Maximum system voltage 1500V
 Maximum series fuse rating 20A
 Power tolerance 0 ~ +5W
 Temperature coefficients of Pmax -0.45%/°C
 Temperature coefficients of Voc -0.28%/°C
 Temperature coefficients of Isc 0.04%/°C
 Nominal operating cell temperature (NOCT) 45±2 °C

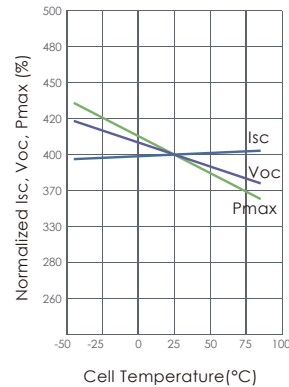
Mechanical Characteristics

Cell Type Orion Perc Mono-crystalline (166mm*83mm)
 No. of cells 120 (6×20)
 Dimensions 1755*1038*30mm
 Weight 20.3kg
 Front Glass Orion Technology
 Frame Anodized Aluminium Alloy (Sliver/Black optional)
 Junction Box IP68 Rated
 Output Cables TÜV 1x4.0mm² UL 12AWG, Length: 1100mm

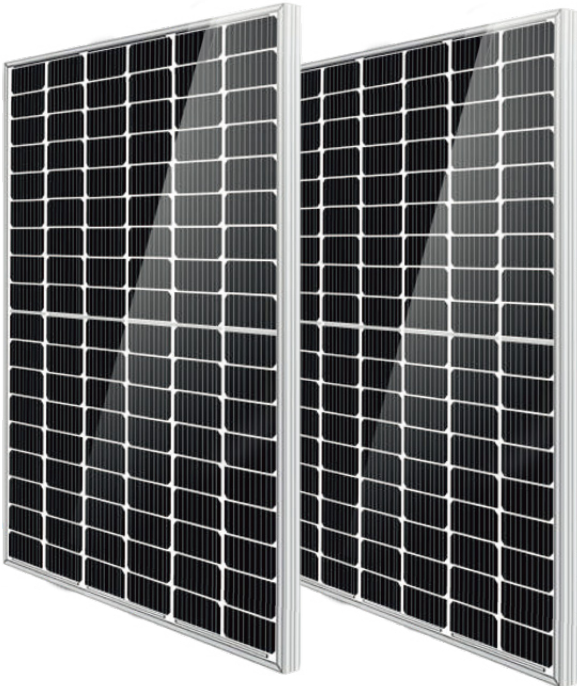
Current-Voltage & Power-Voltage Curves(400W)



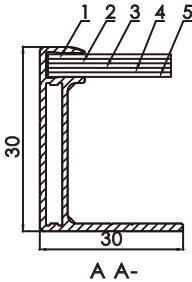
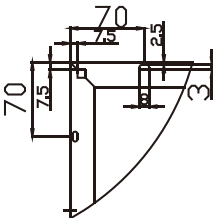
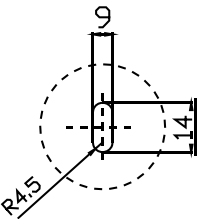
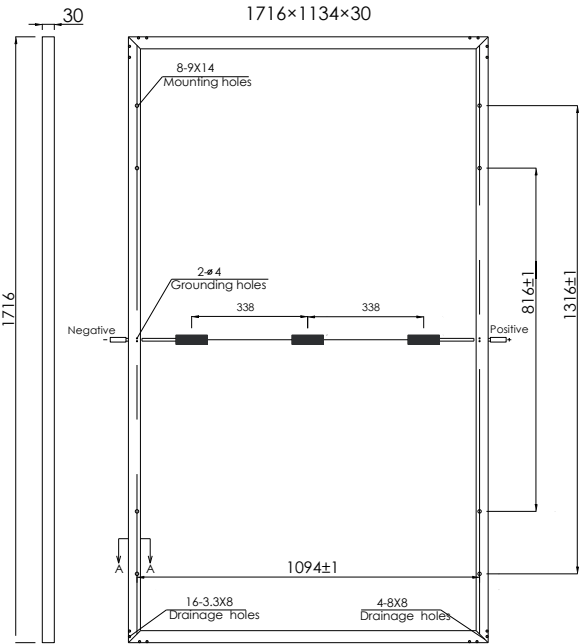
Temperature Dependence of Isc, Voc, Pmax



M450-108



Dimensions



Packaging Configuration

Standard packaging: 36pcs / pallet
 Module quantity per 20'container: 316pcs
 Module quantity per 40'container: 900pcs

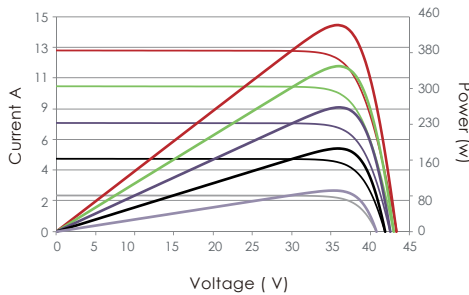
Specifications

Module Type M450-108
 Maximum Power at STC (Pmax) 450Wp
 Maximum Power Voltage (Vmp) 33.65V
 Maximum Power Current (Imp) 13.38A
 Open-circuit Voltage (Voc) 39.97V
 Short-circuit Current (Isc) 14.53A
 Module Efficiency (%) 23.1%
 Operating Temperature (°C) -40°C~+85°C
 Maximum system voltage 1500V
 Maximum series fuse rating 25A
 Power tolerance 0 ~ +5W
 Temperature coefficients of Pmax -0.45%/°C
 Temperature coefficients of Voc -0.28%/°C
 Temperature coefficients of Isc 0.04%/°C
 Nominal operating cell temperature (NOCT) 45±2 °C

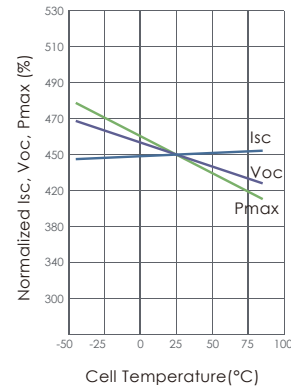
Mechanical Characteristics

Cell Type Orion Perc Mono-crystalline (182mm*91mm)
 No. of cells 108 (6*18)
 Dimensions 1716*1134*30mm
 Weight 20.7kg
 Front Glass Orion Technology
 Frame Anodized Aluminium Alloy (Sliver/Black optional)
 Junction Box IP68 Rated
 Output Cables TÜV 1x4.0mm² UL 12AWG, Length: 1100mm

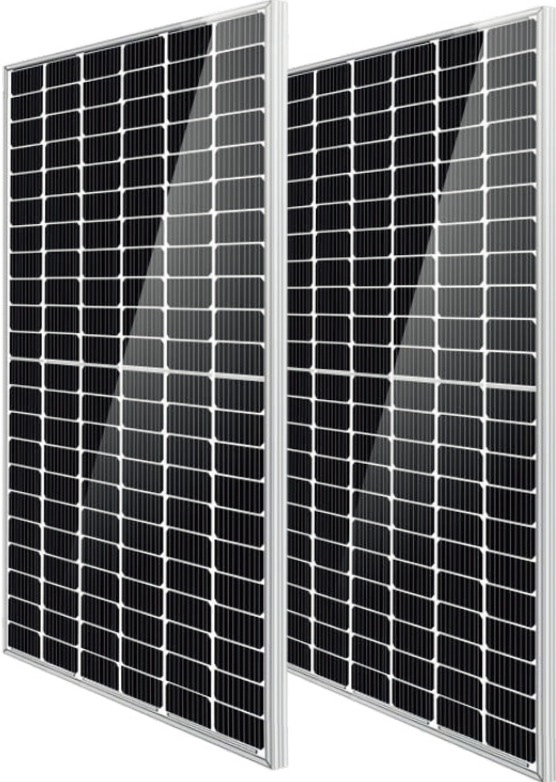
Current-Voltage & Power-Voltage Curves(450W)



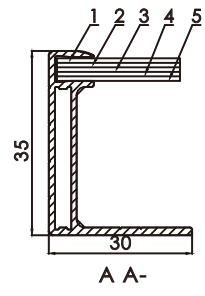
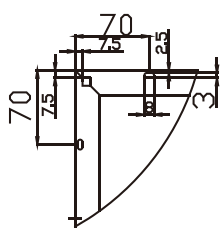
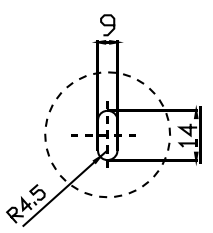
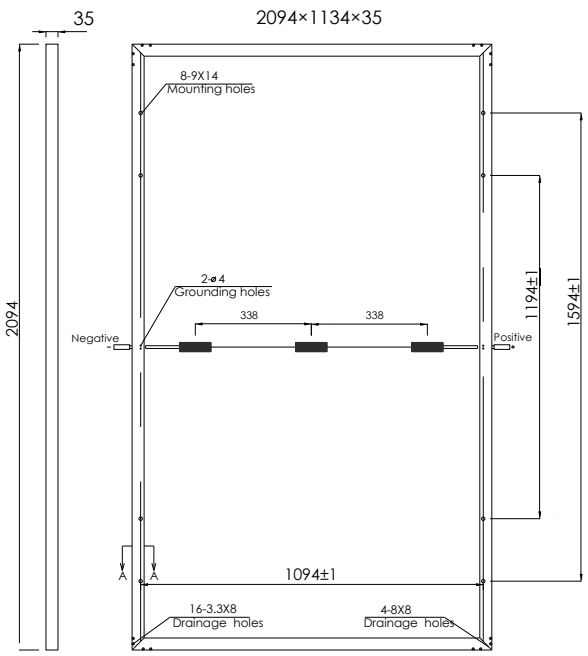
Temperature Dependence of Isc, Voc, Pmax



M500-132



Dimensions



Packaging Configuration

Standard packaging:	31pcs / pallet
Module quantity per 20'container:	280pcs
Module quantity per 40'container:	700pcs

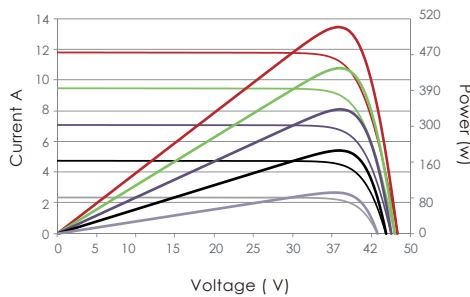
Specifications

Module Type	M500-132
Maximum Power at STC (Pmax)	500Wp
Maximum Power Voltage (Vmp)	38.39V
Maximum Power Current (Imp)	13.03A
Open-circuit Voltage (Voc)	45.67V
Short-circuit Current (Isc)	13.99A
Module Efficiency (%)	21.1%
Operating Temperature (°C)	-40°C~+85°C
Maximum system voltage	1500V
Maximum series fuse rating	25A
Power tolerance	0 ~ +5W
Temperature coefficients of Pmax	-0.45%/°C
Temperature coefficients of Voc	-0.28%/°C
Temperature coefficients of Isc	0.04%/°C
Nominal operating cell temperature (NOCT)	45±2 °C

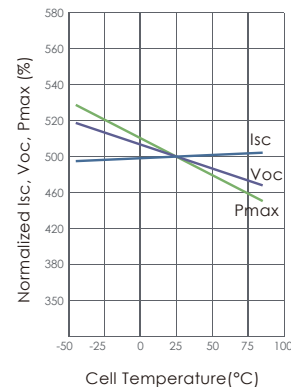
Mechanical Characteristics

Cell Type	Orion Perc Mono-crystalline (182mm*91mm)
No. of cells	132 (6*22)
Dimensions	2094*1134*35mm
Weight	26.5kg
Front Glass	Orion Technology
Frame	Anodized Aluminium Alloy (Sliver/Black optional)
Junction Box	IP68 Rated
Output Cables	TUV 1x4.0mm ² UL 12AWG, Length: 900mm

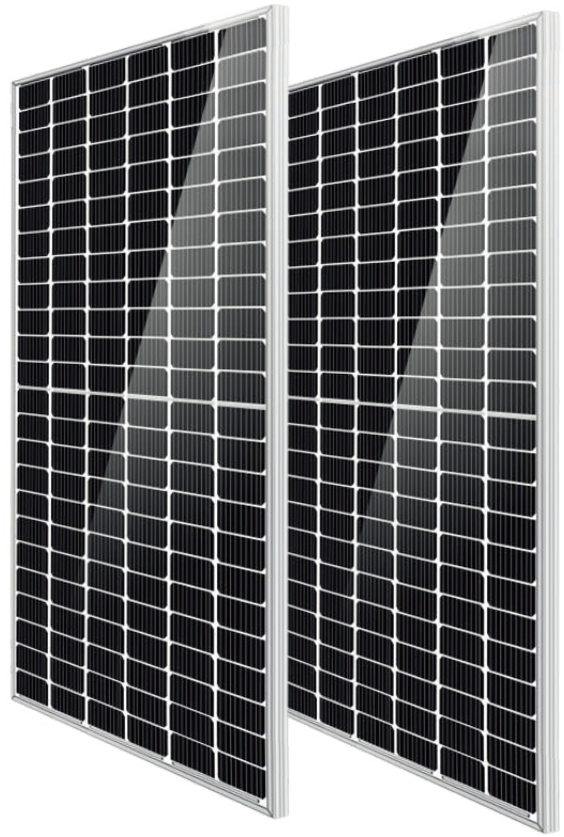
Current-Voltage & Power-Voltage Curves(500W)



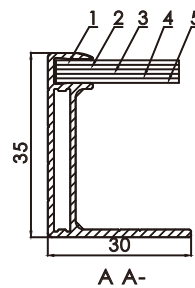
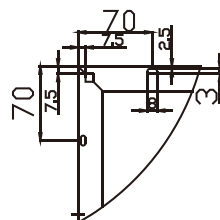
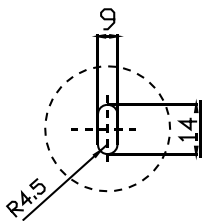
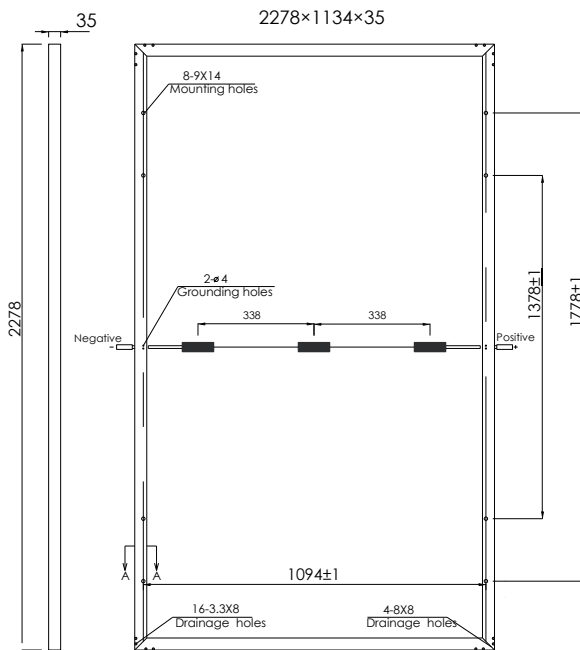
Temperature Dependence of Isc, Voc, Pmax



M560-144



Dimensions



Packaging Configuration

Standard packaging: 31pcs / pallet
 Module quantity per 20'container: 260pcs
 Module quantity per 40'container: 630pcs

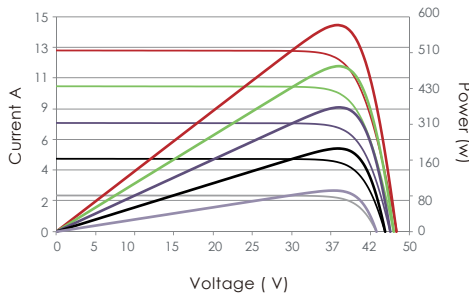
Specifications

Module Type M560-144
 Maximum Power at STC (Pmax) 560Wp
 Maximum Power Voltage (Vmp) 42.86V
 Maximum Power Current (Imp) 13.07A
 Open-circuit Voltage (Voc) 50.27V
 Short-circuit Current (Isc) 14.06A
 Module Efficiency (%) 21.68%
 Operating Temperature (°C) -40°C~+85°C
 Maximum system voltage 1500V
 Maximum series fuse rating 30A
 Power tolerance 0 ~ +5W
 Temperature coefficients of Pmax -0.45%/°C
 Temperature coefficients of Voc -0.28%/°C
 Temperature coefficients of Isc 0.04%/°C
 Nominal operating cell temperature (NOCT) 45±2 °C

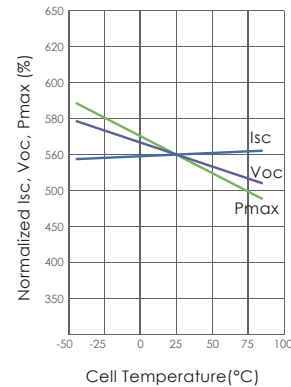
Mechanical Characteristics

Cell Type Orion Perc Mono-crystalline (166mm*83mm)
 No. of cells 144 (6*24)
 Dimensions 2278*1134*35mm
 Weight 27.8kg
 Front Glass Orion Technology
 Frame Anodized Aluminium Alloy (Sliver/Black optional)
 Junction Box IP68 Rated
 Output Cables TÜV 1x4.0mm² UL 12AWG, Length: 900mm

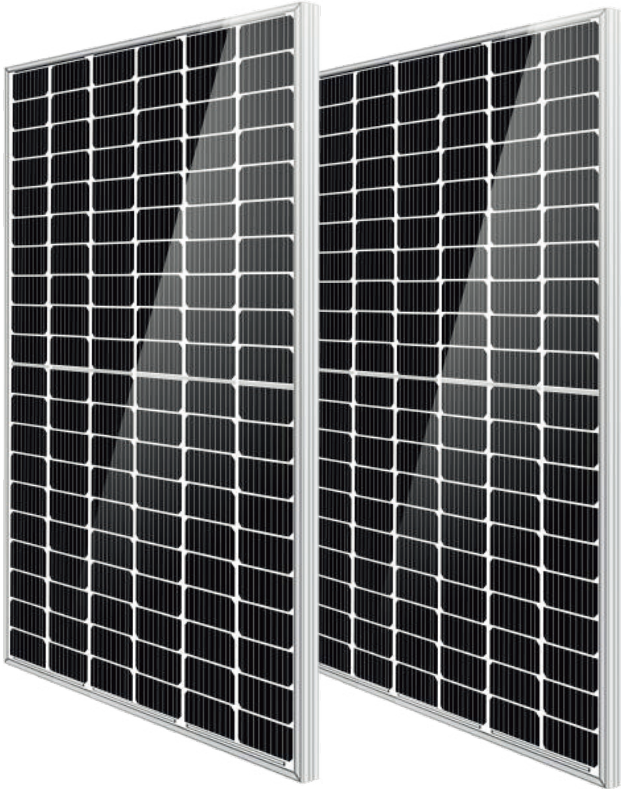
Current-Voltage & Power-Voltage Curves(560W)



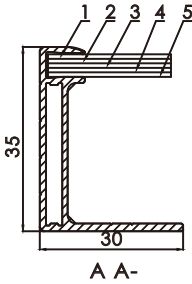
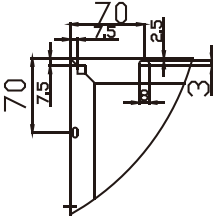
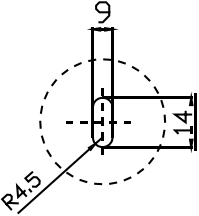
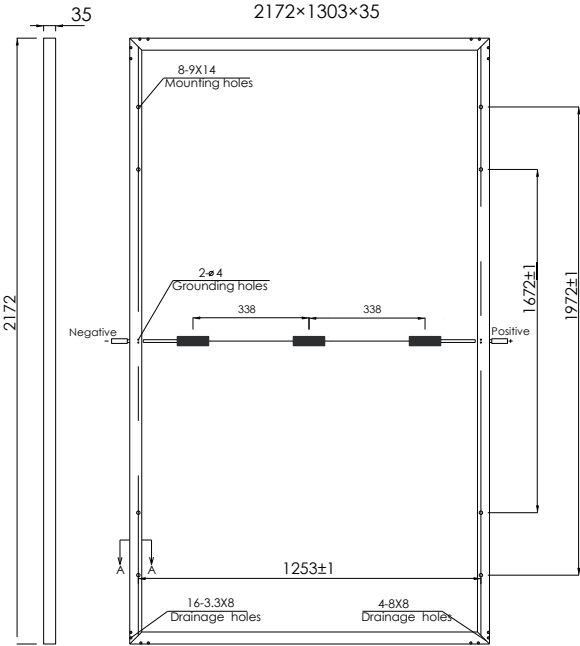
Temperature Dependence of Isc, Voc, Pmax



M600-120



Dimensions



Packaging Configuration

Standard packaging:	31pcs / pallet
Module quantity per 20'container:	225pcs
Module quantity per 40'container:	558pcs

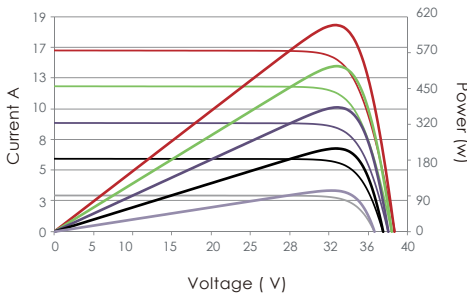
Specifications

Module Type	M600-120
Maximum Power at STC (Pmax)	600Wp
Maximum Power Voltage (Vmp)	34.51V
Maximum Power Current (Imp)	17.39A
Open-circuit Voltage (Voc)	37.9V
Short-circuit Current (Isc)	18.39A
Module Efficiency (%)	21.2%
Operating Temperature (°C)	-40°C~+85°C
Maximum system voltage	1500V
Maximum series fuse rating	30A
Power tolerance	0 ~ +5W
Temperature coefficients of Pmax	-0.45%/°C
Temperature coefficients of Voc	-0.28%/°C
Temperature coefficients of Isc	0.04%/°C
Nominal operating cell temperature (NOCT)	45±2 °C

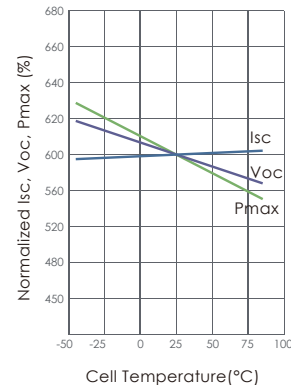
Mechanical Characteristics

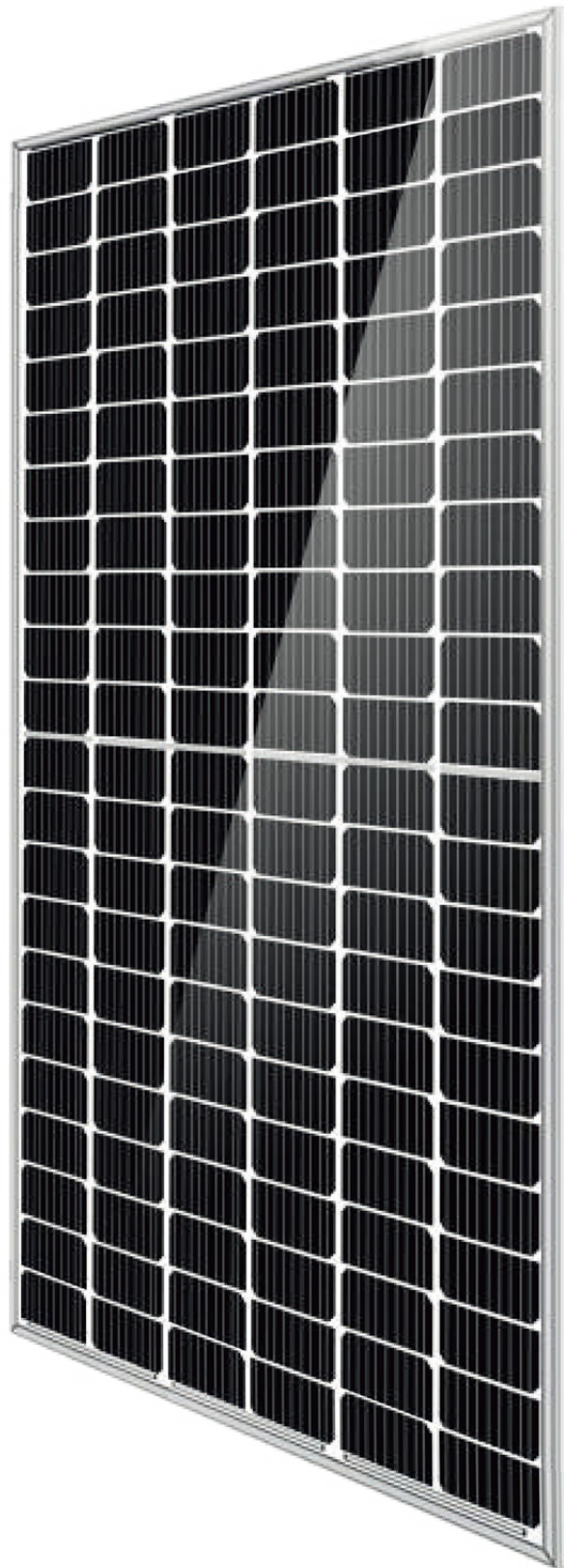
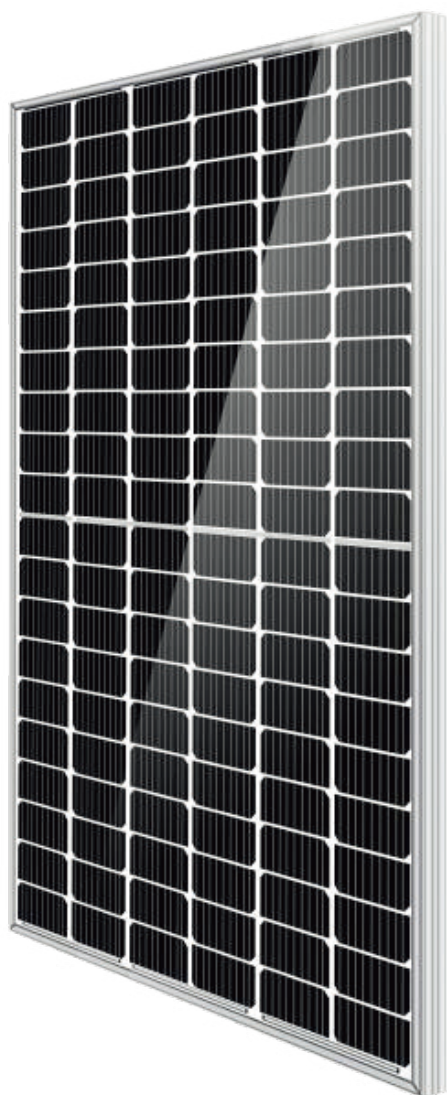
Cell Type	Orion Perc Mono-crystalline (210mm*105mm)
No. of cells	120 (6×20)
Dimensions	2172*1303*35mm
Weight	30.6kg
Front Glass	Orion Technology
Frame	Anodized Aluminium Alloy (Sliver/Black optional)
Junction Box	IP68 Rated
Output Cables	TÜV 1x4.0mm ² UL 12AWG, Length: 900mm

Current-Voltage & Power-Voltage Curves(600W)



Temperature Dependence of Isc, Voc, Pmax





PLS MONO

200-600W
Common Design

PLUSRITE ELECTRIC (CHINA) CO., LTD
27 Teng Long Road, Wujin District,
Changzhou, Jiangsu, China 213149

www.plusrite.com
info@pluslight.com

